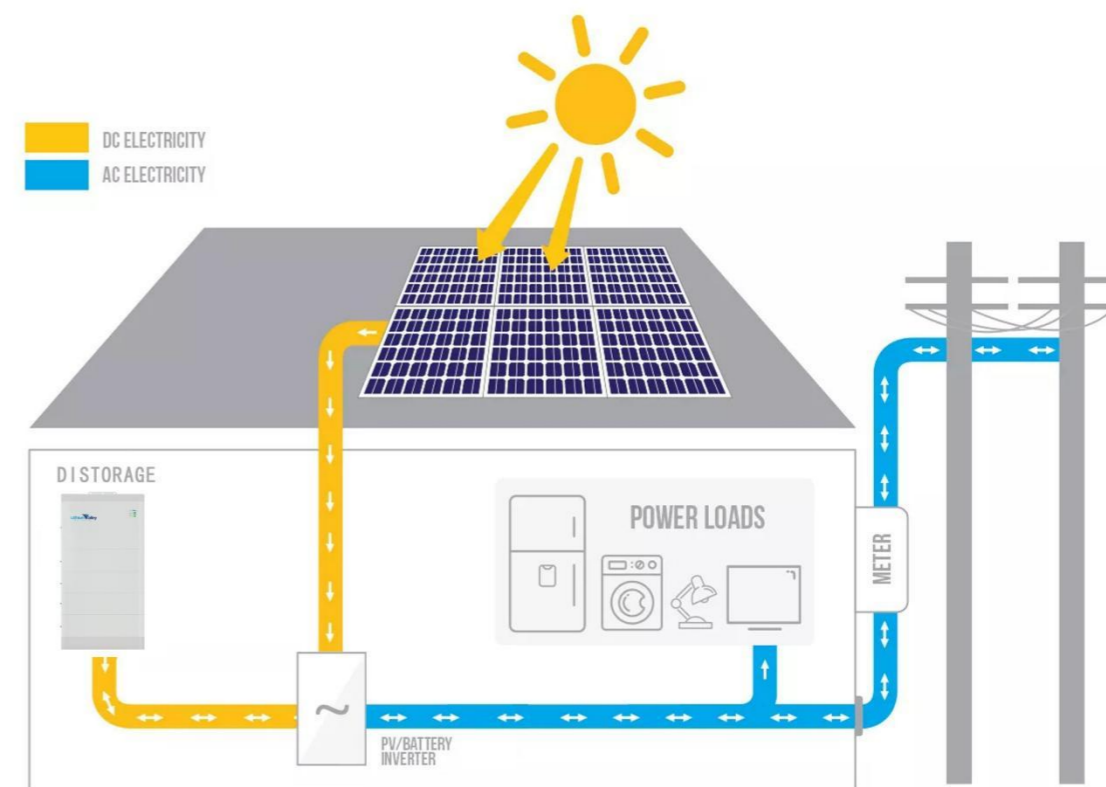


Smart Household Energy Storage System

- High-voltage LiFePO4 battery solution, Single module is 51.2V 50Ah 2.56kWh.
- 3 to 10 layers recommended.
- Inverter you need to choose 380V 3phase input and output, common is 8-15KW inverter.
- Cobalt Free Lithium Iron Phosphate (LFP) Battery: Maximum Safety, Life Cycle and Power.
- Applicable on grid or hybrid on and off-Grid solar energy storage system.
- Self-Consumption Optimization for Residential and Commercial Applications.
- Modular Design Simplifies Transport and Installation.







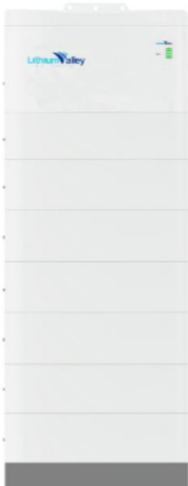
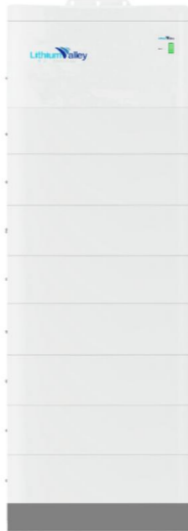
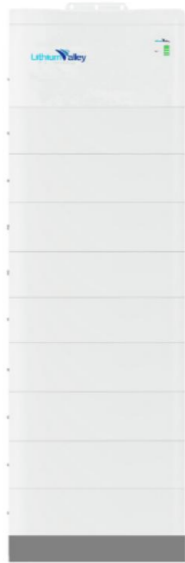
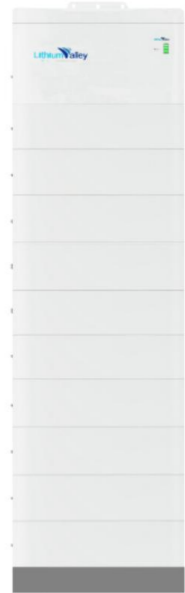
Shenzhen Lithium Valley Technology CO., LTD

Head Office:
Room 2018, HuiLong Business Center
Minzhi Street, Longhua District
Shenzhen China

Factory address:
No.4, Fuzhu 4th Street Zhangyang
Community Zhangmutou Town
Dongguan China

Logistic Center:
Unit 11,27/F, K. Wah Centre, 191 Java
Road, North Point, Hong Kong

Technical Specification

| Model | 153.6V 50Ah | 204.8V 50Ah | 256V 50Ah | 307.2V 50Ah | 358.4V 50Ah | 409.6V 50Ah | 460.8V 50Ah | 512V 50Ah |
|--------------------------------|---|---|---|---|---|---|---|---|
| Number of layers | 3 layers | 4 layers | 5 layers | 6 layers | 7 layers | 8 layers | 9layers | 10layers |
| Picture |  |  |  |  |  |  |  |  |
| Energy | 7.68KWh | 10.24KWh | 12.8KWh | 15.36KWh | 17.92KWh | 20.48KWh | 23.04KWh | 25.6KWh |
| Operating Voltage Range | 129.6V~168.48V | 172.8V~224.64V | 216V~280.8V | 259.2V~336.96V | 302.4V~393.12V | 345.6~449.28V | 388.8V~505.44V | 432V~561.6V |
| Dimension (L*W*H) | 600*210*820 | 600*210*980 | 600*210*1140 | 600*210*1300 | 600*210*1460 | 600*210*1620 | 600*210*1780 | 600*210*1940 |
| Net Weight | 102.5 | 129 | 155.5 | 182 | 208.5 | 235 | 261.5 | 288 |
| Recommend charge current | 10~25A | | | | | | | |
| Max continue charge current | 50A | | | | | | | |
| Max continue discharge current | 50A | | | | | | | |
| Peak current | 100A | | | | | | | |
| Display | The information of Battery, such as SOC, battery voltage and so on | | | | | | | |
| Communication | Support RS485 / CAN | | | | | | | |
| Operating temperature | -20℃~55℃ | | | | | | | |
| Environment | Indoor | | | | | | | |
| Relative humidity | 5%~95% | | | | | | | |
| Cooling | Natural convection | | | | | | | |
| Cell technology | Lithium-iron phosphate (LiFePO4) | | | | | | | |
| Life cycle | 6000 times @80%DOD | | | | | | | |

Single module Technical Specification

| | |
|-----------------------|--|
| Dimension (L*W*H) | High Voltage Box:600*210*250 Battery Box:600*210*160 |
| Battery module weight | 26.5kg |

