

## LV-BST-H2.56Aa

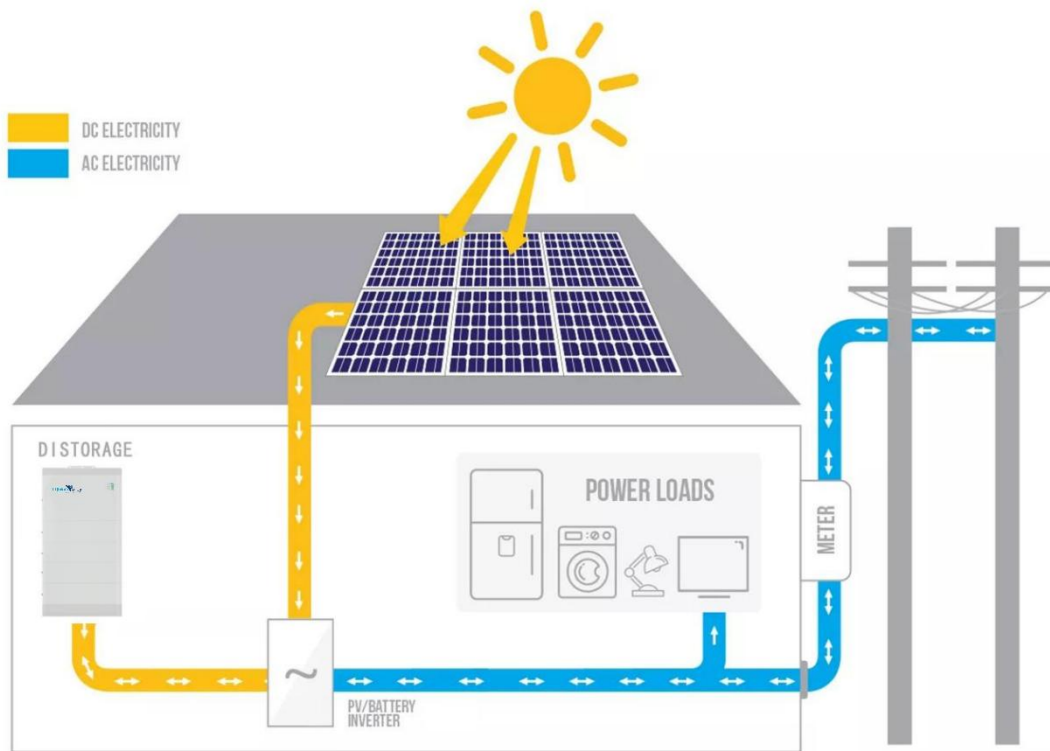
### Household Energy Storage

Capacity ▶

51.2V 50Ah Single module

### Smart Household Energy Storage System

- ◆ High-voltage LiFePO4 battery solution, Single module is 51.2V 50Ah 2.56kWh.
- ◆ 3 to 10 layers recommended.
- ◆ Inverter you need to choose 380V 3phase input and output, common is 8-15KW inverter.
- ◆ Cobalt Free Lithium Iron Phosphate (LFP) Battery: Maximum Safety, Life Cycle and Power.
- ◆ Applicable on grid or hybrid on and off-Grid solar energy storage system.
- ◆ Self-Consumption Optimization for Residential and Commercial Applications.
- ◆ Modular Design Simplifies Transport and Installation.



## Application Scenarios



Villa



Farm



Communication  
base station



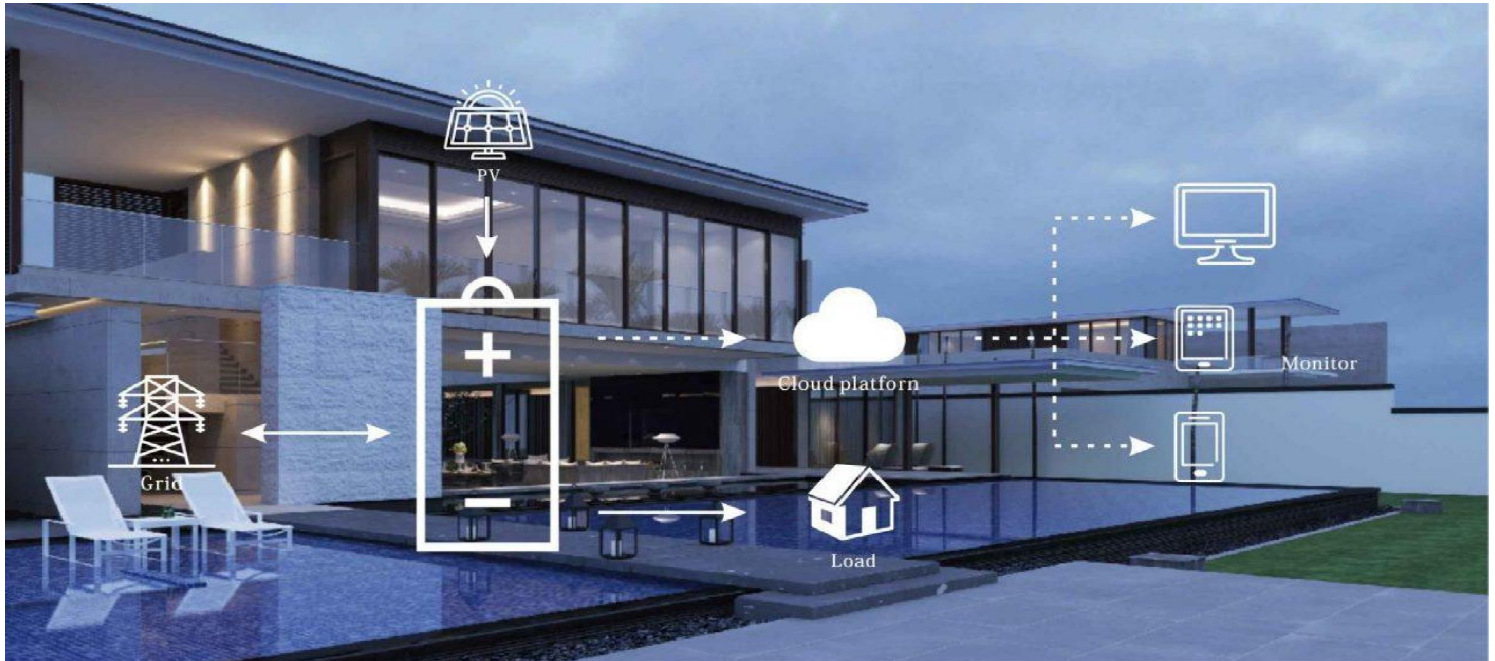
Household



Nomadic area



Field power  
supply



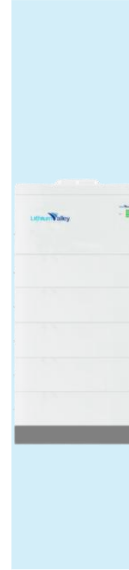
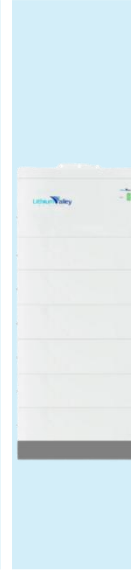
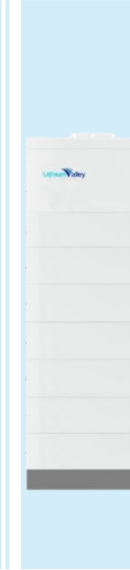
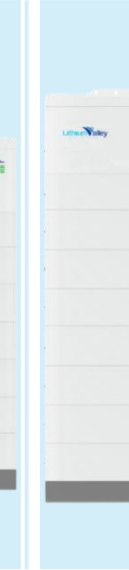
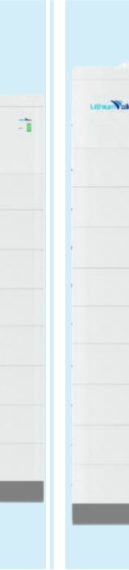
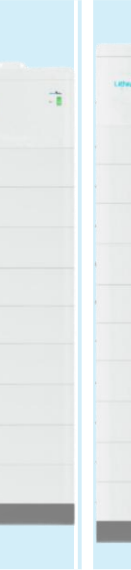


## Advantages

- ◆ High Voltage
- ◆ High Capacity
- ◆ Scalable Design
- ◆ Integrated Design
- ◆ Efficient Performance
- ◆ Safe and Reliable
- ◆ Real-time Monitoring
- ◆ Intelligent BMS



### Technical Specification

Model	153.6V 50Ah	204.8V 50Ah	256V 50Ah	307.2V 50Ah	358.4V 50Ah	409.6V 50Ah	460.8V 50Ah	512V 50Ah
Number of layers	3 layers	4 layers	5 layers	6 layers	7 layers	8 layers	9layers	10layers
Picture								
Energy	7.68KWh	10.24KWh	12.8KWh	15.36KWh	17.92KWh	20.48KWh	23.04KWh	25.6KWh
Operating Voltage Range	129.6V~ 168.48V	172.8V~ 224.64V	216V~ 280.8V	259.2V~ 336.96V	302.4V~ 393.12V	345.6~ 449.28V	388.8V~ 505.44V	432V~ 561.6V
Dimension (L*W*H)	600*210* 820	600*210* 980	600*210* 1140	600*210* 1300	600*210*1 460	600*210*1 620	600*210*17 80	600*210*1 940
Net Weight	102.5	129	155.5	182	208.5	235	261.5	288
Recommend charge current	10~25A							
Max continue charge current	50A							



Max continue discharge current	50A
Peak current	100A
Display	The information of Battery, such as SOC, battery voltage and so on
Communication	Support RS485 / CAN
Operating temperature	-20°C ~ 55°C
Environment	Indoor
Relative humidity	5%~95%
Cooling	Natural convection
Cell technology	Lithium-iron phosphate (LiFePO4)
Life cycle	6000 times @80%DOD

### Single module Technical Specification

Dimension (L*W*H)	High Voltage Box:600*210*250 Battery Box:600*210*160
Battery module weight	26.5kg

