



LithiumValley
technology

TNE ENERGY

LV-BST-L5.12Aa

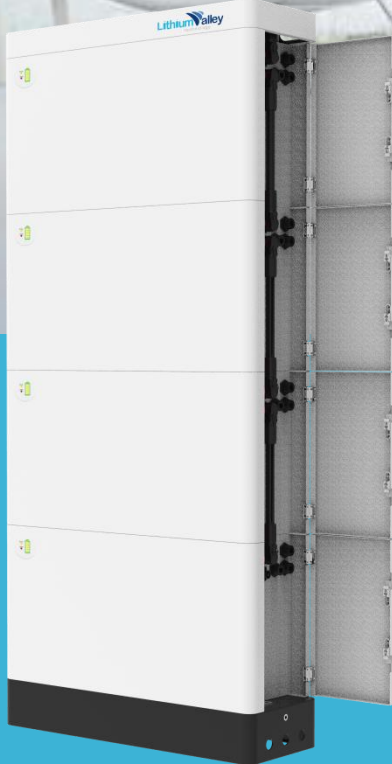
Household Energy Storage

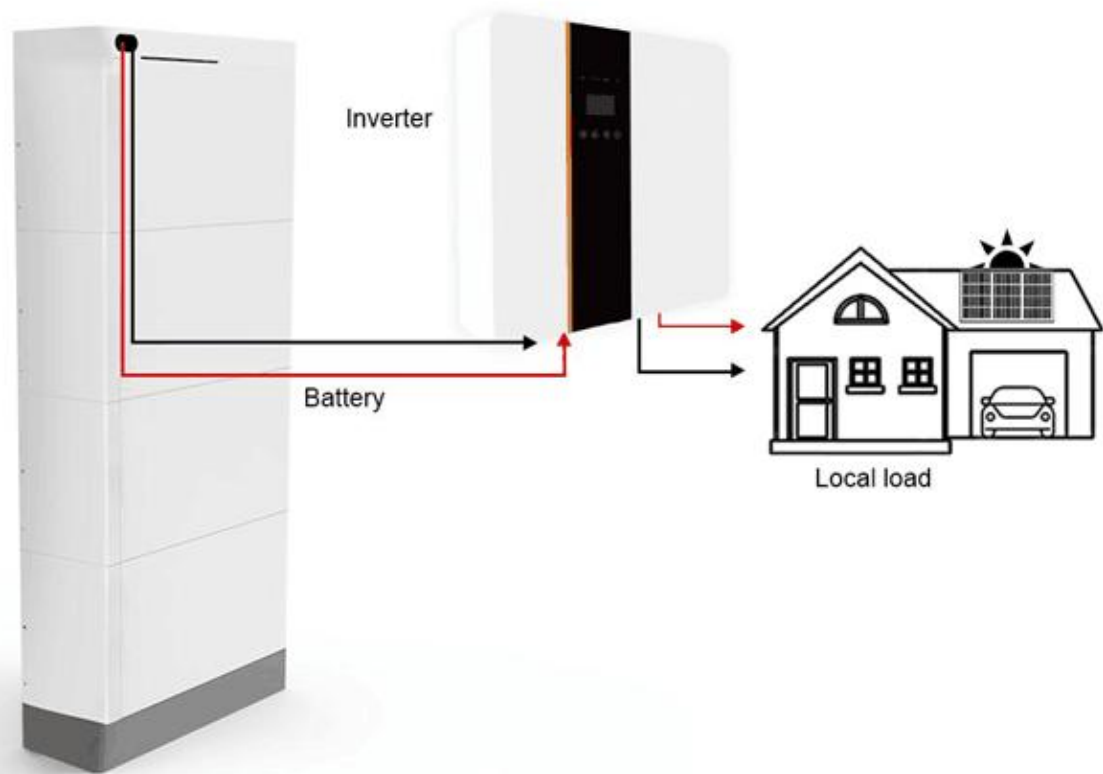
Capacity ▶

51.2V 100Ah Single module

Stackable LiFePO4 Battery for Energy

- ◆ 51.2V Low voltage LiFePO4 battery module, Single module is 51.2V 100Ah 5.12kWh.
- ◆ 1 to MAX.6 layers recommended.
- ◆ Can choose common 48V single or three phase 5KW, 8KW,10KW, 12KW off grid or hybrid on and off grid solar inverter.
- ◆ Cobalt Free Lithium Iron Phosphate (LFP) Battery: Maximum Safety, Life Cycle and Power.
- ◆ Capable of High-Powered Emergency-Backup and Off-Grid Function.
- ◆ Self-Consumption Optimization for Residential and Commercial Applications.





Application Scenarios



Villa



Farm



Communication
base station



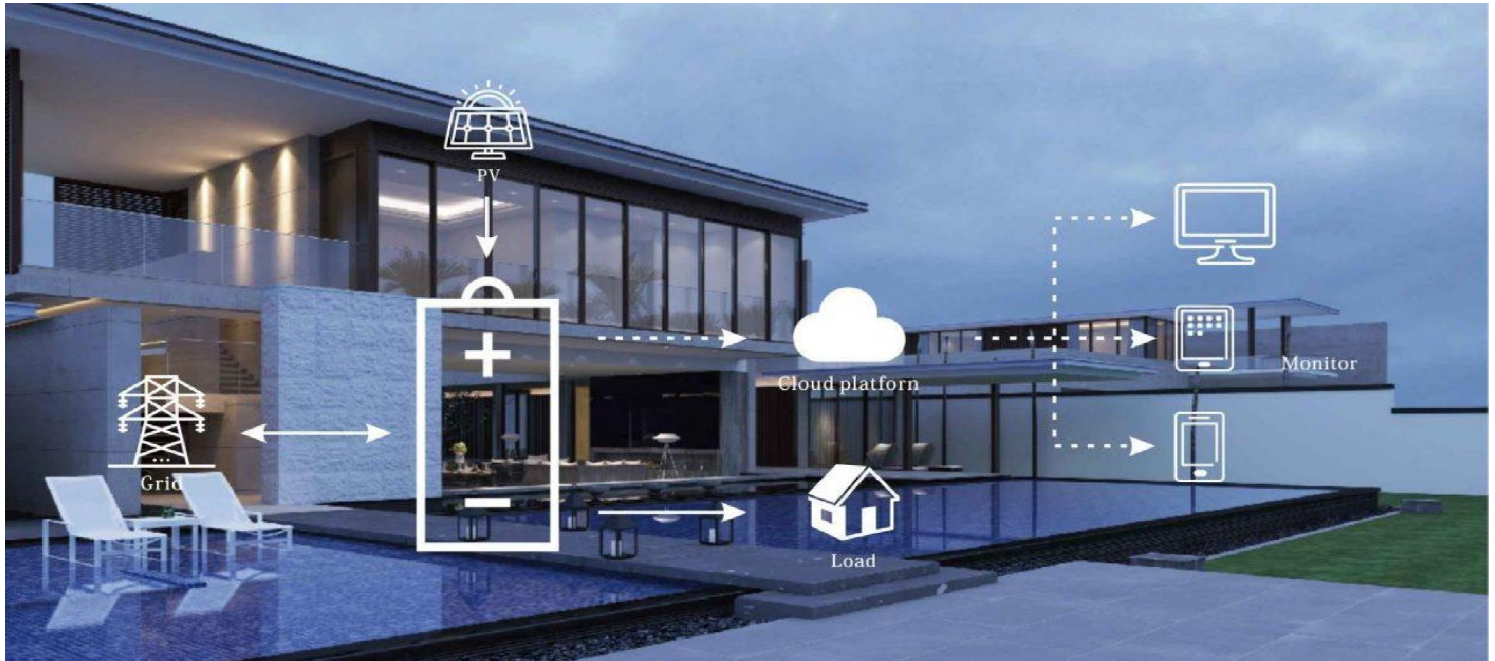
Household



Nomadic area



Field power
supply



Advantages

- ◆ High Capacity
- ◆ Scalable Design
- ◆ Integrated Design
- ◆ Efficient Performance
- ◆ Safe and Reliable
- ◆ Real-time Monitoring
- ◆ Durability
- ◆ Intelligent BMS



LED Display	The information of Battery, such as SOC, battery working status.
Communication	Support RS485 / CAN
Operating temperature	-20°C ~ 55°C
Environment	Indoor
Relative humidity	5%~95%
Cooling	Natural cooling
Cell technology	Lithium-iron phosphate (LiFePO4)
Life cycle	6000 times @80%DOD
Certificates	IE62619 CB (ITS) IEC62040 CNAS, CE-EMC TUV,UN 38.3

Single module Technical Specification

Module	51.2V 100Ah, 5.12kWh
Dimension (L*W*H)	600*210*300mm
Battery module weight	48KG

