



LithiumValley
technology

TNE ENERGY

LV-BST-L5.12Aa

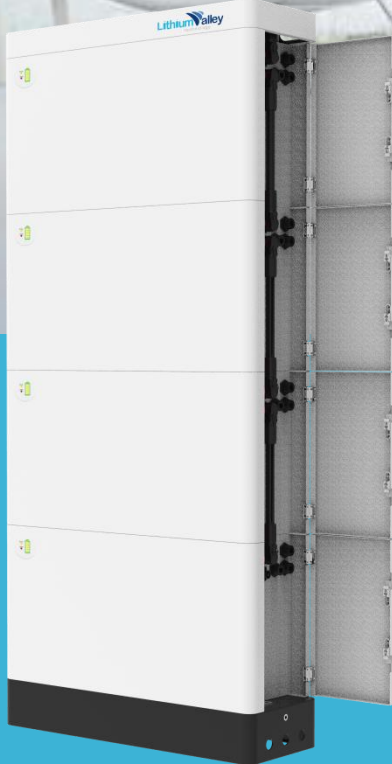
Household Energy Storage

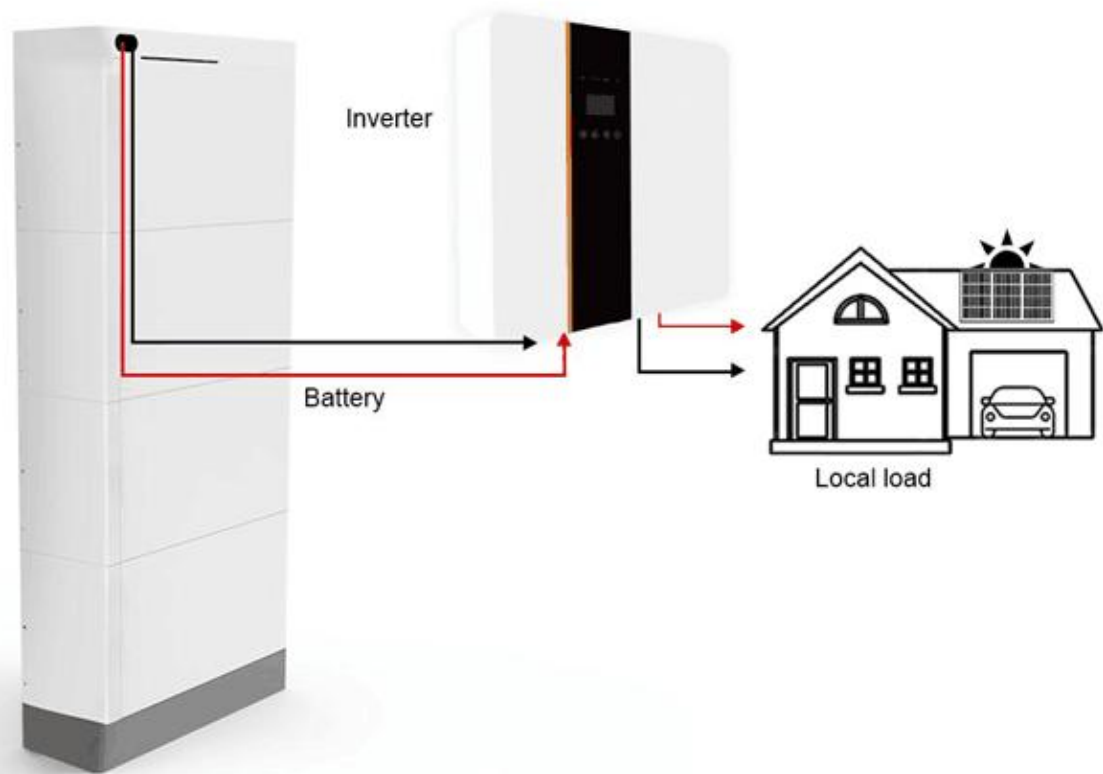
Capacity ▶

51.2V 100Ah Single module

Stackable LiFePO4 Battery for Energy

- ◆ 51.2V Low voltage LiFePO4 battery module, Single module is 51.2V 100Ah 5.12kWh.
- ◆ 1 to MAX.6 layers recommended.
- ◆ Can choose common 48V single or three phase 5KW, 8KW,10KW, 12KW off grid or hybrid on and off grid solar inverter.
- ◆ Cobalt Free Lithium Iron Phosphate (LFP) Battery: Maximum Safety, Life Cycle and Power.
- ◆ Capable of High-Powered Emergency-Backup and Off-Grid Function.
- ◆ Self-Consumption Optimization for Residential and Commercial Applications.





Application Scenarios



Villa



Farm



Communication
base station



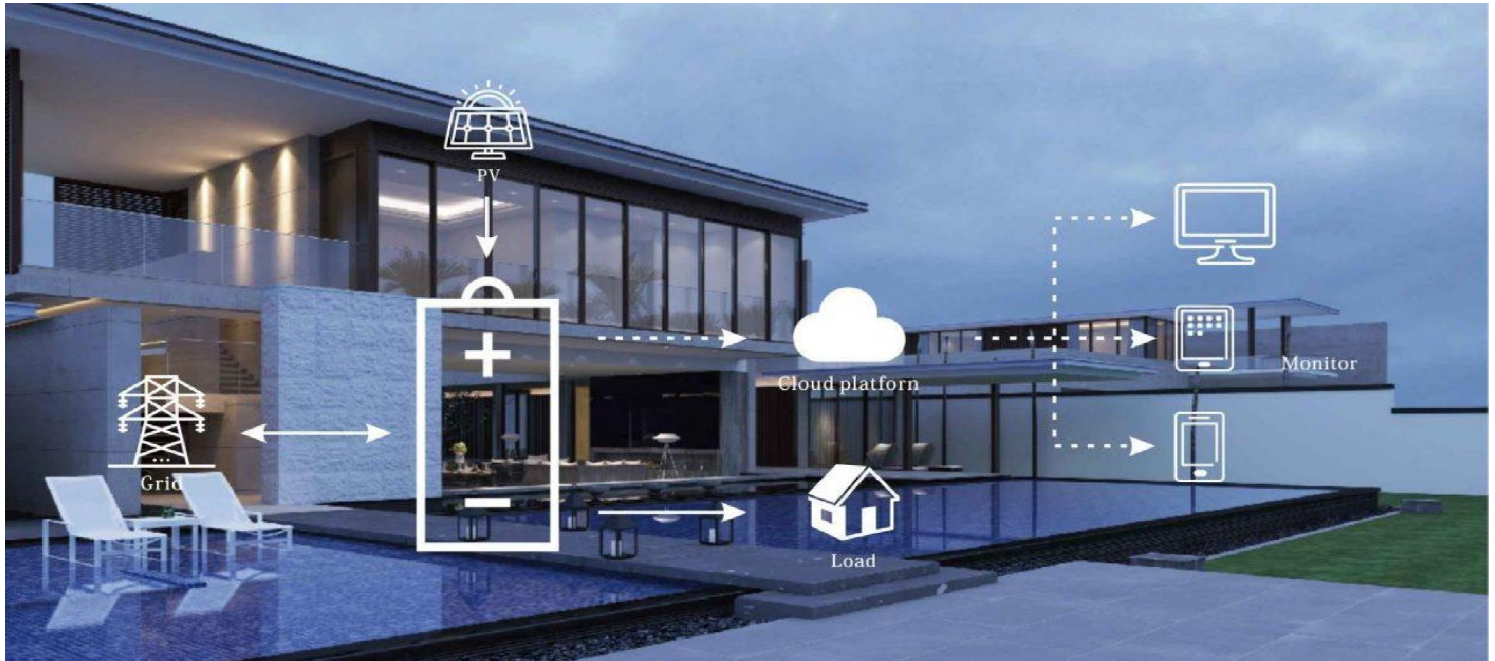
Household



Nomadic area



Field power
supply



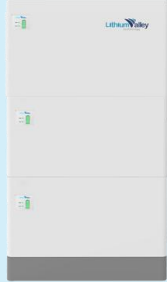

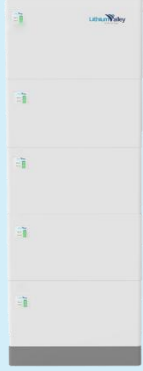



Advantages

- ◆ High Capacity
- ◆ Scalable Design
- ◆ Integrated Design
- ◆ Efficient Performance
- ◆ Safe and Reliable
- ◆ Real-time Monitoring
- ◆ Durability
- ◆ Intelligent BMS



Technical Specification

Model	51.2V 100Ah	51.2V 200Ah	51.2V 300Ah	51.2V 400Ah	51.2V 500Ah	51.2V 600Ah
Number of layers	1 layers	2 layers	3 layers	4 layers	5 layers	6 layers
Picture						
Energy	5.12KWh	10.24KWh	15.36KWh	20.48KWh	25.6KWh	30.72KWh
Operating Voltage Range	43.2V~56.16V					
Dimension (L*W*H)mm	600*210*440	600*210*740	600*210*1040	600*210*1340	600*210*1640	600*210*1940
Weight(KG)	71	119	167	215	263	311
Recommend charge current	50A	50A	50A	50A	50A	50A
MAX. charge/discharge current	100A	100A	100A	100A	100A	100A
Peak discharge current	200A	200A	200A	200A	200A	200A



LED Display	The information of Battery, such as SOC, battery working status.
Communication	Support RS485 / CAN
Operating temperature	-20°C ~ 55°C
Environment	Indoor
Relative humidity	5%~95%
Cooling	Natural cooling
Cell technology	Lithium-iron phosphate (LiFePO4)
Life cycle	6000 times @80%DOD
Certificates	IE62619 CB (ITS) IEC62040 CNAS, CE-EMC TUV, UN 38.3

Single module Technical Specification

Module	51.2V 100Ah, 5.12kWh
Dimension (L*W*H)	600*210*300mm
Battery module weight	48KG

